



OATLEY WEST Lantern

DATES FOR YOUR DIARY

22
AUG

Values Leaf Assembly
2:20pm School Hall

24
AUG

Community Festival
Weekend

27
AUG

Stewart House Cloth-
ing Appeal

28
AUG

P & C Meeting 6:30pm
School Library

30
AUG

Father's Day Stall

Reminder: New Date for
Cake Day: Wednesday
5th September 2J & 4F



Oatley Park Avenue Oatley NSW 2223
P 02 9580 5048 F 02 9580 6372
E oatleywest-p.school@det.nsw.edu.au

oatleywest-p.schools.nsw.edu.au

*The School by the park -
Great Kids, Great Teachers, Great School!*

MR NASH'S CORNER

COMMUNITY FESTIVAL

The Oatley West Public School Community Festival is finally here. We look forward to a weekend of fun, rides, food and entertainment on Saturday 25 August and Sunday 26 August with gates open from 10am – 4pm each day. Opening night will be held on Friday 24 August from 7pm. Thanks to all our amazing sponsors who give so generously. Consider supporting them next time you're looking for a product or service. This is the 38th year for this major fundraising event for Oatley West Public School and it just keeps getting better with new stalls, new rides and the return of all your favourites. We hope you can make it! All proceeds from the festival go directly to the school.

FIVE MINUTES WITH MISS MANUEL



Favourite food:

Thai Food

Favourite Song:

Anything by Crowded House or Neil Finn

Favourite Place to Holiday:

I have a few favourite places, Norfolk Island and the rainforest retreat.

Favourite Book:

Jane Eyre by Charlotte Bronte

How long at OWPS?

This is my 5th year at OWPS.

Favourite Thing about OWPS:

The special events like the Fancy Hat Parade at Easter and the Christmas Concert. The kids get so excited which is great!

VALUE FOR THE WEEK

FAIRNESS

Equal opportunity provided for all students.
Stand up for others who need help.
Play by the rules.



Principal Nash continued

ST. GEORGE PERFORMING ARTS FESTIVAL

What a wonderful week of dance, singing, and showcase of our band and percussion power. I was certainly very proud at the high level of achievement at all performances. Oatley West Public School was well represented with Junior and Senior Dance, Choir and Bands. Thanks go to all of the teachers involved including the Backstage Crew and General Assistants for transporting the fill in stage over the orchestra pit. The staging is stored at OWPS. Mrs Ferlazzo was the Concert Coordinator for the Tuesday performances and Mrs Chappell was the Concert Director coordinating all schools across the three performances. It's certainly a busy time but worth every minute just to see the huge smiles and excitement of performing on the faces of all our students; something they will treasure and remember forever. Being involved could just introduce them to a career on stage or in the production area of the theatre!

PARKING ISSUES

Unfortunately I've had further complaints from our neighbours about parents parking across driveways and across people's front lawns. I have been issued with photos of cars displaying their number plates. My advice to the neighbours is to call Police or Council inspectors to have them removed. One particular neighbour needs constant access to their driveway due to a sick relative in the family. It's not really too much to ask not to park across people's driveways.

There has also been an increase of parents using the staff carpark to drop off children in the morning. This is also a very dangerous practice. Please do not use the carpark as a drop off zone or for walking into school each morning or in the afternoon. This is a very dangerous.

EXTERNAL VALIDATION

The school will be undergoing External Validation this week commencing on Tuesday with a visit from the School Education Director then a panel visit on Thursday. The panel reviews all the information presented by the school. The panel will consist of six of our own staff plus Principal School Leadership and a visiting Principal.



Paul Nash

**Department of Education****Strategic Plan 2018-2022**

Our Goals:

'3. Every student, every teacher, every leader and every school improves each year.'

**RECYCLING—WAR ON WASTE**

Many students have been interested in the recent focus on the program *War on Waste*. At OWPS we are very supportive of this: we already recycle all paper/card, cans & bottles and our Organic Diggers Club is very active in educating our students on the importance of growing vegetables and reducing waste. Mr Nash has also been approached by students and he is working with them on further ideas for recycling across the school.

We are happy to advise we recycle all small batteries—there is a drop off box at the school office.



It's almost time! This Friday Opening Night kicks off a weekend of fun and entertainment for the whole family! Then it's onto the main event from 10am to 4pm Saturday and Sunday.

Make sure you have a look at the Checklist note which will go home with all students this week (or sneak a peek at the end of the newsletter) to get ready for a big weekend. We've also included a list of all the outdoor activities and entertainment so you can plan your days.

WE NEED YOU! VOLUNTEER TODAY

Thanks to all parents, carers and teachers who've jumped on to nominate their volunteer spots. We've filled over 40% of times but still need more volunteers across the Festival. There's no experience necessary and most spots are just 2 hours so if you are heading to the Festival why not spend some of your time keeping the engine running. Your kids will also love to buy their sausage sandwich or raffle ticket from you!

Head to owpscommunityfestival.org/volunteer

Here are a few examples of how you can get involved:

Opening night wait staff: a great way to combine catching up with everyone with some volunteering

Rides ticket sales: you'll be everyone's favourite person selling ride passes and this is a great one to do as a pair, have a chat while you volunteer

BBQ and Flavours of Asia: whether you want to sell, cook or serve jump onto a BBQ or Flavours of Asia shift – no-one wants the crowds to get hangry!

Outdoor games and entertainment: a chance for your older kids to get involved either helping the games organisers or acting as MC for our entertainment stage - adults are also welcome and depending on children's age will need to supervise

RAFFLE TICKETS DUE BACK TODAY

Ticket butts and money from sold raffle tickets are due back in the office today. Make sure you get yours in to be in the draw. Please also return unsold tickets as we sell them over the weekend.

ART CAFE/CAKE STALL PACKAGING COMING WEDNESDAY

What an amazing response to our donation call out. Based on the forms received so far **over 800 goodies are being donated** which must be a Festival record! With such a great selection, you're sure to find the perfect treat over the weekend so head over for some morning or afternoon tea or pick something up to take home.

Packaging will be given to classroom teachers on Wednesday. If you're still planning to donate make sure you drop your form in by Tuesday. Katarina will also be at the basketball area with extra packaging if you can't find the form and still want to contribute. Any questions please contact Katarina Petkovski (novamode@optusnet.com.au).

KEYS TO THE CELLAR DROP-OFF TODAY AND WEDNESDAY

Drop-off points are open today and Wednesday during school pickup or get in touch with Hayley Smith (hayleysb@gmail.com) or Kristy Grasso (kristy_grasso@yahoo.com.au) if you can't make it.

IT'S DUMPLING TIME

On Saturday 11th August at the OWPS canteen, a few grandparents and parents from the school gave up their valuable time to join Flavours of Asia Coordinator Cat Tai, making dumplings for the stall.

A huge thank you to the following grandparents and parents: Grandma Xia, Grandma Xu, Grandma Cai, Grandma Tang, Grace L, Lin L, Fiona B, Selina B, Annie H, Mavis Y, Jia L and Shuzi C.

These dumplings will be available along with your regular favourites - curry puffs, beef rendang, noodles and other Asian delights. This year by popular demand, you'll also be able to get your own copy of the beef rendang recipe for a gold coin donation... mmmm curry night!



BUY NOW

Buy unlimited rides passes · Visit our popular online Silent Auction and start bidding · Buy tickets to Opening Night · Check out art gallery pieces and purchase

All in one convenient place: owpscommunityfestival.org/buy-now

A FEW THANK YOUS FROM THE FESTIVAL COMMITTEE

Your Festival Committee starts planning in February to organise this Festival Weekend. It's a lot of fun but there is much to be done and it wouldn't be possible without the support of our amazing and generous community.

Because of your support, we have raised over \$200,000 for our school in the last 5 years alone!

Thank you to the many **local families and businesses** who volunteer, donate items for Trash & Treasure, the raffle and silent auction, book a market stall or help promote the event.

To **Paul, Neralie and all of the teachers and staff at OWPS**, thank you! Your ongoing support and patience providing logistical support, access to spaces throughout the year, sharing updates with children and their families and of course getting involved in the Festival itself is very much appreciated.

Finally, thank you to all our **amazing sponsors**, some who've been with us for many years and some who've come on board more recently. Without their financial support we would not be able to put on such a strong event so please consider supporting them.



PROUDLY SUPPORTED BY

PRINCIPAL SPONSOR



PLATINUM SPONSOR



GOLD SPONSOR

**Mortdale
Automotive
Services**



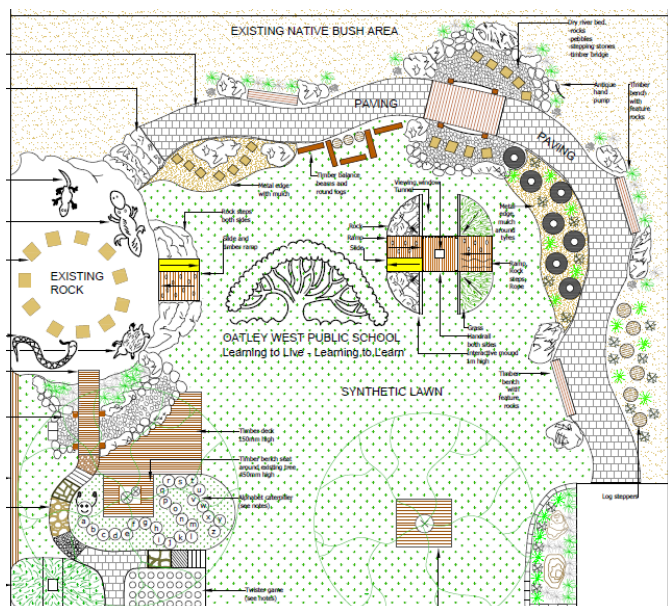
SILVER SPONSORS



BRONZE SPONSORS

- Adventure Co. ▼ Crayons ▼ Oatley Music On Parade ▼ Oatley Optical
- Oatley Physiotherapy ▼ O'Connors Pharmacy ▼ On Call Conveyancing Services
- Real Results Fitness ▼ Riley's Garage ▼ St George Travel ▼ Verdaflore

NEW: OUTDOOR LEARNING SPACE



Oatley West Public School’s P&C have been successful in their application through **Community Building Partnership** for a grant to create an **outdoor learning space** at OWPS.

Working closely with the school and a local landscape gardener, a plan has been created to develop a natural space beyond the existing astro turf area.

Stage 1 of the project will be underway soon. Additional stages need fundraising to help pay for them with a target of completing the project by May 2019.

Our biggest fundraiser is the upcoming Community Festival so we need your support by coming along and having a great weekend.

Other P&C initiatives including our Trivia Night and School Banking are also contributing funds towards this project.

A large scale plan of this new area is on display in the school office foyer and also attached to this newsletter.

More wonderful ways to help with the project will be detailed over coming weeks.

P&C MEETING

Our Next P&C General Meeting will be held Tuesday 28th August 2018 at 6.30pm in School Library.

LIBRARY NEWS

Premier's Reading Challenge: Adding books to the PRC Years K - 2
Miss Blake will add the books for all K - 2 classes

Premier's Reading Challenge: Adding books to the PRC Years 3 - 6

1. Books you have read

If you can't remember what you have read:

Log into your student portal and go to - Oliver Library - Orbit - My Library - Loan History
You will be able to see all the books you have borrowed from the Library.

2. Premier's Reading Challenge

Log into the PRC using your school user name and password

Go to Book Lists - Challenge level by title

The books are listed in alphabetical order by title. Find your title and click add.

The book will be automatically added to your list.

<https://online.det.nsw.edu.au/prc/booklist/home.html>

Rita Fitzpatrick & Holly Blake

FATHER'S DAY STALL



This is a reminder for the Father’s Day Stall. The orders close on the 23rd of August. Don’t forget to put your order in now via Flexischools. The stall will be held on Thursday the 30th of August.

UNIFORM SHOP

Manager – Sia Coelho

Enquiries: scoelho@iinet.net.au

The Uniform Shop is open for your convenience every Thursday from 9-10am at the end of G Block, next to 1M. This onsite service would not be available without our wonderful volunteers.

All students should now be in their winter uniform. All uniform requirements are outlined on the School website.

Thank you: Many thanks to Joanne G and Bee M-B who volunteered at the Uniform Shop last week.

Kindy 2019 – We have ordered stock for Kindergarten 2019. If you haven't already enrolled your child or know a family living in the catchment area who has a child starting Kindy at OWPS next year, please contact the office for an enrolment form. Enrolling your child now, will assist the Uniform Shop with ordering additional stock in time for orientation.

Enviro Bags – Oatley West Enviro Bags will be available for sale at the Uniform Shop for \$3.50. All proceeds will go towards the Year 6 fundraiser.

Raincoat SALE: \$10 – We have small and medium raincoats which are being discontinued, for sale. These raincoats are a hooded poncho, designed to fit over a child's schoolbag when worn. They are best suited to children in Years K-2.

Uniform Orders: Order forms (dated January, 2018) can be completed and dropped in to the school office. Please note, orders are not accepted via e-mail. All orders will be delivered to your child's classroom on Thursday when the shop is open. The preferred payment method for orders is by Credit Card or Cheque as we cannot be held accountable for lost cash/orders. Cards are generally debited one day prior to delivery.

We take great pride in the appearance of the children at Oatley West Public School and encourage all students to wear the correct school uniform.

SCHOOL BANKING



Many thanks to the wonderful parents, Faith S, Tina Y, Angel D, Annie H and Hazel S who volunteer as our School Banking Co-ordinators and help process our banking last Thursday,

Remember, **Thursday** is School Banking day and students should bring in their weekly deposit.

For every deposit made at school, students will receive a silver Dollarmites token. Once students have individually collected 10 tokens they can redeem them for an exclusive School Banking reward item in recognition of their regular savings habits.

School Banking is also a great fundraiser for our school. Our school receives a Regular Savers Contribution of \$5 for every 10 deposits processed per student as well as an Annual Contribution which is based on the number of students who made at least one School Banking deposit in the prior year.

If your child has lost their book, they can bring their money to school in a sealed envelope with a note on the next School Banking day. We will issue them with a replacement.

Thank you for supporting the School Banking program at **OWPS**. Remember, only Term 1, 2 & 3 prizes are available to claim.

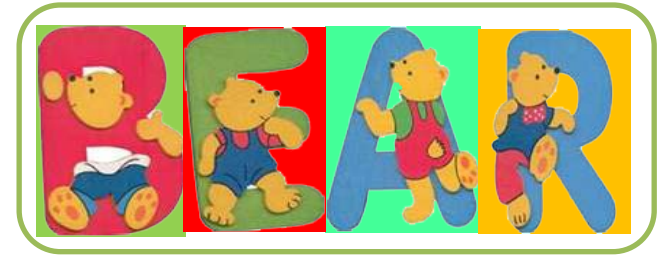
Please note Secret Scratch Pad no longer available.

<https://www.commbank.com.au/content/dam/commbank-assets/banking/youth/2018-01/school-banking-parent-pack-rewards-card-colour-0118.pdf>

Current turnaround time for prize claim is 2-3 weeks.

Thursday is our banking day!

BEING EXCITED ABOUT READING



Parent Helpers Needed

This program is aimed at accelerating the reading skills of students (in Year 1 and 2) who would benefit from additional reading support.



This project involves a one hour training session and commitment to 10 weeks of the program.

If you could volunteer, **even just half an hour** per week to support this program. Please come on **Tuesday 4th September at 9:45am.**

This session will take approximately 1 hour and we will meet at the office to show you where to go. 😊 If you are unable to attend the information session but would like to volunteer please contact the office with your name and phone number so we can arrange another suitable time to show you the program. Mrs Tracey

Outdoor Games

Come down to the Astro Turf to experience ****Free**** activities, to get the body moving, disperse some energy, try something new and enjoy the festivities as a community. All ages and skill levels welcome – it's all about the fun!!!

SATURDAY 25 AUGUST

10am–12pm	NRL (Ball Passing and skills session)
12–1.30pm	Games
1.30–2.30pm	Little Kickers
2.30–4pm	Ready Steady Go

SUNDAY 26 AUGUST

10am–11.30pm	Games
11.30am–12.30pm	Little Kickers
12.30–1pm	Games
1–2pm	Netball Oatley RSLYC
2–4pm	Games



OATLEY WEST PUBLIC SCHOOL

Community Festival

Sat & Sun 10am–4pm

25-26 AUGUST

ART SHOW

MARKETS

ENTERTAINMENT

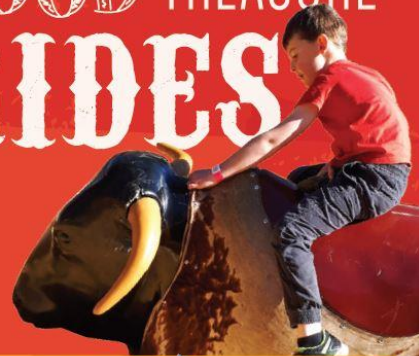
Jewellery

TRASH AND

FOOD

TREASURE

RIDES



Scheduled Activity Programme

Entertainment

We have a great programme of free entertainment lined up for you.

SATURDAY 25 AUGUST

Main Stage

- 10:30** Rogersons Dance
- 11:00** Better Health Tai Chi Chuan Group
- 11:30** Jeremy Hockings
- 12:00** On Stage Studios
- 12:30** United Taekwondo
- 1:00** OWPS Percussion Groups
- 2:00** OWPS Bands
- 3:05** Adventure Trail Draw
- 3:30** Jump Street Performers

Under the COLA

- 11–12pm** St George Brass Band
- 1–2pm** St George Brass Band

SUNDAY 26 AUGUST

Main Stage

- 10:30** Squire Dance Academy
- 11:00** OWPS Choirs, recorder group and dance
- 12:00** Vocal Workout
- 12:30** Studio 23
- 1:00** Shimmy JuJu Dance
- 1:30** Mortdale Physie
- 2:05** Raffle draw
- 2:15** Sara Petrovski
- 2:35** Adventure Trail draw

Get your entries in before you miss out!

Silent Auction and Raffle end 2pm Sunday 26 August. Raffle is drawn shortly after 2pm and Auction vouchers/items can be collected from 3pm

PLANT LIST

Dianella 'Silver Streak'
Silver Streak Flax Lily
.6 x .6 m
x 5 + 11



Liriope 'Evergreen Giant'
Evergreen Giant Lily Turf
.5 x .5 m
x 5 + 14



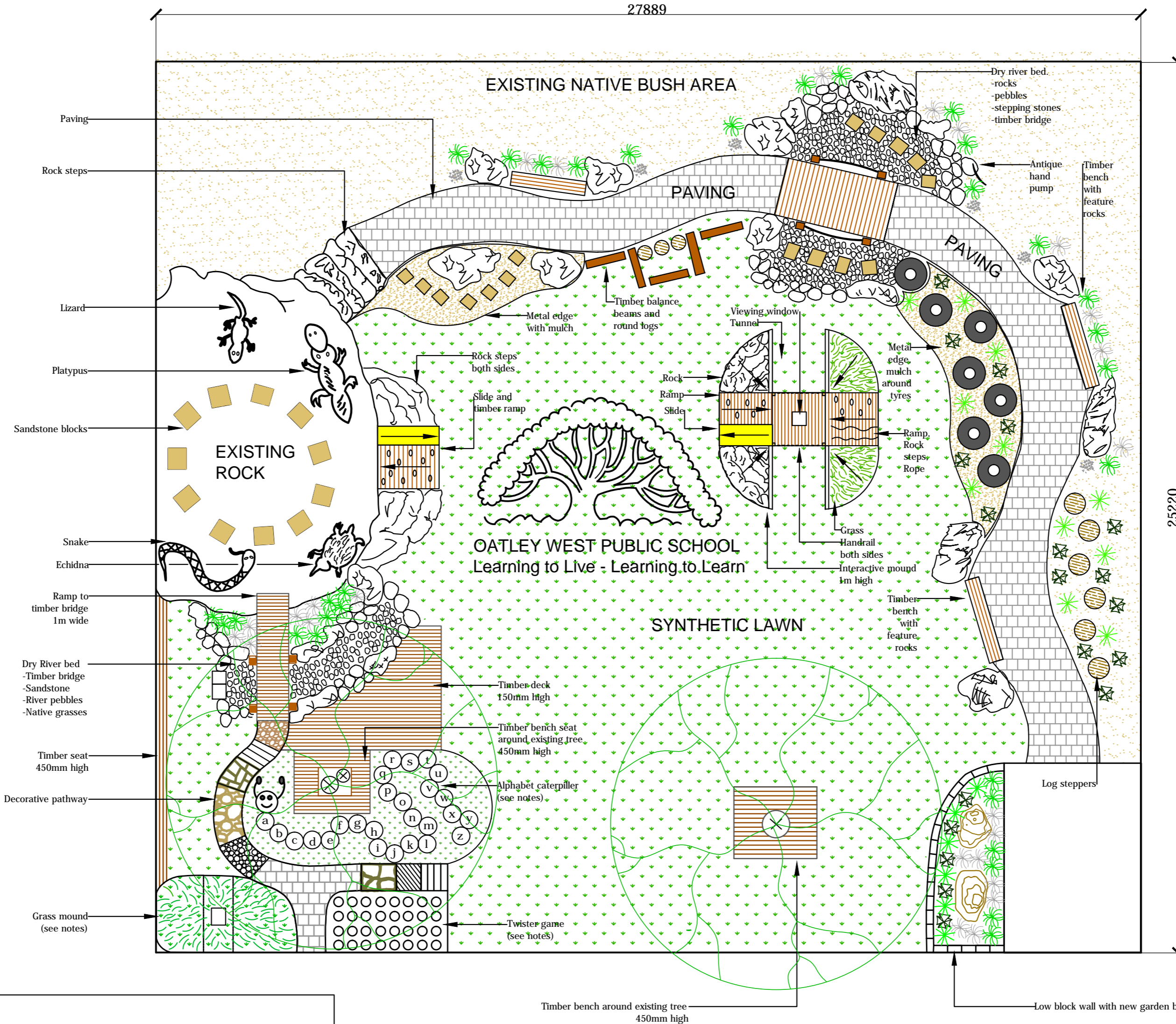
Lomandra 'Seascape'
Seascape Mat Rush
.6 x .6 m
x 15 + 9



Lomandra 'Tanika'
Tanika Mat Rush
.6 x .6 m
x 15 + 16



Westringia 'Grey Box'
Grey Box Coast Rosemary
40 x 40mm
x 6



NOTES

- Gardens to be watered by existing rainwater tanks, using an automatic watering system on timer.
- Timber work - benches, bridges, decks - use treated pine framework and hardwood decking.
2b. Timber interactive mound - use timber decking, sleepers to retain mounds.
2c. - Handrail on top, both sides of decking.
- Synthetic lawn - laid on 75mm road base, 75mm metal dust, use 35mm summer prestige.
3b. Synthetic lawn will be brushed with machine and 10kg of ACI spread over lawn.
3c. Synthetic lawn edges to be pegged with galvanised pegs.
- Pavers - using Baines Masonry 190mm x 190mm, charcoal concrete.
4b. Edge paver - using Appin Stone colour.
- Plants - Assorted native grasses.
- Low block wall - using Baines Masonry, colour Tasman, one block high.
6b. Low block wall capping - use colour charcoal.
- Feature rock - made from concrete, render and colour.
- Decorative pathway - use river pebbles, sandstone, white pebbles and timber.
- Timber bridge - near large rock will be curved with chain handrail.
- Grass mound - Concrete framework, 800mm high with viewing window, using 35mm synthetic turf.
- Alphabet caterpillar - 19mm synthetic turf - feature colours, yellow, blue, red.
- Twister game - 19mm synthetic turf - feature colours, yellow, blue, red and white.
- School logo - made from synthetic lawn using coloured synthetic 19mm multiscape.
- Animals - can be made from concrete or fibroglass.
- Tyres - concreted in with synthetic lawn inserts.
- Round logs - concreted into ground at different heights for steppers.
- Timber bridge in pathway will be level, with handrail made from chains.

LEGEND			
SYNTHETIC TURF		SMALL RIVER PEBBLES	
TIMBER FEATURES		LARGE RIVER PEBBLES	
PAVING		WHITE PEBBLES	
GRASS MOUND		SAWN SANDSTONE	
ALPHABET CATERPILLER		SANDSTONE FLAGGING	
TWISTER GAME		DECKING 45° ANGLE	
EXISTING NATIVE AREA		TIMBER HALF ROUNDS	
		ROCK STEPS	
		SLIDE	
		TYRES STEPPERS	
		LOG STEPPERS	
		TIMBER BALANCE BEAM	
		SANDSTONE BLOCKS	

NORTH POINT

the botanical escape
 consult + create

the botanical escape M: 0408 206 886 E: jodie@botanicalescape.com.au			
PROJECT	OATLEY WEST PUBLIC SCHOOL Oatley Park Avenue, Oatley, 2223		
PROPOSED LANDSCAPE PLAN			
DATE: 28/06/18	DRAWN: JODIE RIACH	SCALE: 1:100 @ A2	DRAWING No: OWPS3