



OATLEY WEST Lantern

DATES FOR YOUR DIARY

25
JUL

 Value Leaf Assembly
2:20 pm Hall

27
JUL

 Trash & Treasure
Donations

31
JUL

 P & C Meeting 6:30pm
Library

9
AUG

 Education Week
Open Day

24
AUG

 Community Festival
Weekend

 Oatley Park Avenue Oatley NSW 2223
P 02 9580 5048 F 02 9580 6372
E oatleywest-p.school@det.nsw.edu.au
oatleywest-p.schools.nsw.edu.au
*The School by the park –
Great Kids, Great Teachers, Great School!*

MR NASH'S CORNER

Welcome back to Term 3. I hope everyone is returning refreshed and relaxed after the vacation. We look forward to a positive and energetic term.

Staff combined with Brighton Le Sands Public School yesterday for Teacher Professional Learning in the **Got It (Getting On Track In Time)** program specifically looking at Emotion Coaching. Emotion Coaching involves listening to the child's feelings with your whole body, putting the child's feelings into words, helping children to notice what's happening in their body and empathising and helping them to solve their own problem. The program was presented by South Eastern Sydney Local Health District.

FIVE MINUTES WITH Miss Hillsley - AP Early Stage 1



Favourite Event at OWPS:

The Community Festival! I have been blown away how the community unite to raise so much money for the school! Such a fun weekend—my family and I love it!

Favourite Moment at OWPS:

My first day (Term 2, 2017)! Everyone made me feel so welcome. I remember going home after school and thinking what a great school Oatley West is and how lucky I am to be here!

How long at OWPS?

1 1/2 years.

Favourite TV Show:

Grey's Anatomy

Favourite Book:

I love a good crime thriller!

VALUE FOR THE WEEK

RESPECT

Be polite, cooperative and sensible.
Treat people as you would like to be treated.



Principal Nash continued

Education Week Open Day 2018

Education Week is a very important opportunity for schools, parents and the wider community to celebrate student achievement and commitment to their learning. This year's theme is *Today's schools – creating tomorrow's worlds*. This highlights the way that public schools are future-proofing their students to succeed in the 21st century by preparing and equipping young people with the skills, the knowledge and the capabilities they need to lead and flourish in tomorrow's world.

Education Week is a celebration of our schools' commitment to ensuring: system-wide improvement, high expectations for all, personalised student learning, wellbeing and creating stronger ties with the local community.

Oatley West Public School will be inviting all parents, family members and friends in the community to join us during our Education Week celebrations early in Term 3 on **Thursday 9th August**. More detailed information will be sent home later this week. Thanks to Mrs Ferlazzo for organising Education Week this year.

We are looking forward to you joining us and appreciate your continued support.


**Edmonds & Greer Fundraiser
for Sydney Children's Hospital**

Come along to raise funds for the Sydney Children's Hospital by enjoying a Winter Wonderland Fundraising Evening

DATE: **SATURDAY 28TH OF JULY**

TIME: **7.30pm**

VENUE: **Edmonds & Greer**

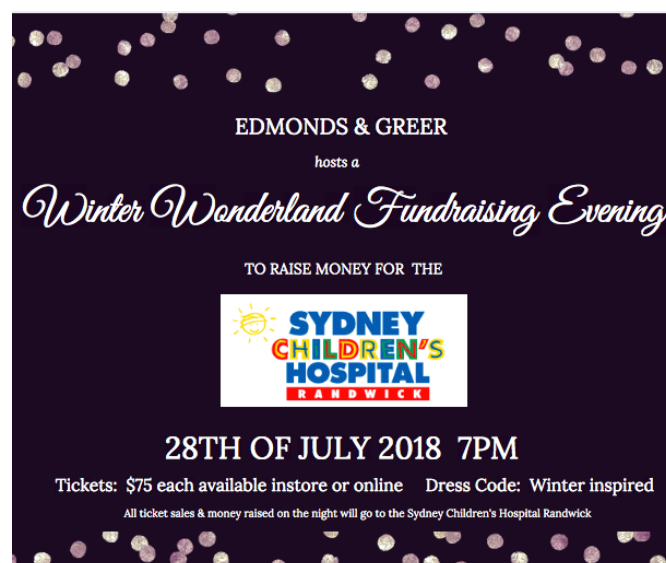
THEME: **WINTER WONDERLAND**

TICKETS: \$75 for canapes all evening & drinks.

Tickets must be purchased at E&G prior to the night.

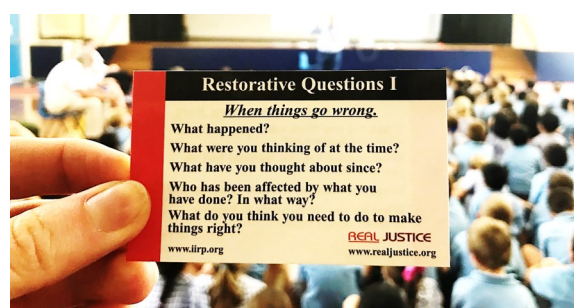
(100% of the proceeds go to the Sydney Children's Hospital)

Principal Nash continued

**Department of Education****Strategic Plan 2018-2022**

Our Values—**Excellence**

'We welcome collaboration and learning with others.'



Library News

**Term 3: BOOK WEEK TERM**

The Australian Children's Book Week theme for 2018 is 'Find Your Treasure'. We encourage your children to search and discover their next great book to read. Over the dinner table, have a discussion about the books your family treasure, and why they are special to you. When you read a story that connects with you, informs you or understands the way you feel, it's like finding treasure.

We will be exploring the best of Australian Children's Literature in Library lessons this term. 'Quality texts inspire and engage students to develop their skills in English language through an appreciation of literature.' (NSW Department of Education)

AUTHOR VISIT:

Frances Watts and illustrator David Legge
Thursday 6th September

We are very excited to have Frances Watts and David Legge for our Book Week visit. All students will be attending the author visit. Their collaborations include *Kisses for Daddy*, *Parsley Rabbit's Book about Books*, *Captain Crabclaw's Crew* and *The Fearsome, Frightening, Ferocious Box*. They will share the inspiration for their books, discuss their creative collaboration and their writing tips.

DRESS UP FOR BOOK WEEK AUTHOR VISIT:

Thursday 6th September

To celebrate Book Week, we would like our students to 'Find their Treasure', and come dressed up as their favourite character from a book. Please use what you have at home, and don't buy costumes.

Rita Fitzpatrick and Holly Blake

P & C Meeting

A P & C General Meeting will be held next Tuesday 31st July at 6:30pm in our School Library.

All welcome!

Value Leaf Assembly



There will be a Value Leaf Assembly tomorrow, Wednesday 25 July after lunch at 2:20pm.

Parents are welcome to attend, however there is limited seating at the back of the hall.

Could parents kindly wait outside the foyer area before proceeding to the hall for the assembly after the lunch bell.

Peer Support Program



This week our students will commence our Peer Support Program with Session 1 Feeling Safe—Being Me! For the next 8 weeks they will be involved in groups of approximately 8-10 students to work with two student Peer Leaders and supervising teacher on Stronger Together—a module that aims to support positive relationships amongst students.

Please see more details on this program at the end of the Newsletter and the details for each of the forthcoming sessions.

www.peersupport.edu.au

National Consistent Collection of Data NCCD

At the end of Term 2, data was collated to capture the students in our school that are provided with an adjustment to support their specific needs in a number of areas, including health, learning difficulties, disabilities, and other areas. This will enhance the support students will receive in the future.

Learning Support Team

Uniform Shop

UNIFORM SHOP
Thursday 9 - 10am

Manager – Sia Coelho

Enquiries: scoelho@iinet.net.au

The Uniform Shop is open for your convenience every Thursday from 9-10am at the end of G Block, next to 1M. This onsite service would not be available without our wonderful volunteers.

All students should now be in their winter uniform. All uniform requirements are outlined on the School website.

Thank you: Many thanks to Bee M-B who volunteered at the Uniform Shop, last week of Term 2.

Kindy 2019 – We are currently in the process of ordering stock for Kindergarten 2019. If you haven't already enrolled your child or know a family living in the catchment area who has a child starting Kindy at OWPS next year, please contact the office for an enrolment form.

Enrolling your child now, will assist the Uniform Shop with ordering sufficient stock in time for orientation.

Raincoat SALE: \$10 – We have small and medium raincoats which are being discontinued, for sale. These raincoats are a hooded poncho, designed to fit over a child's schoolbag when worn. They are best suited to children in Years K-2.

Uniform Orders: Order forms (dated January, 2018) can be completed and dropped in to the school office. Please note, orders are not accepted via e-mail. All orders will be delivered to your child's classroom on Thursday when the shop is open. The preferred payment method for orders is by Credit Card or Cheque as we cannot be held accountable for lost cash/orders. Cards are generally debited one day prior to delivery.

We take great pride in the appearance of the children at Oatley West Public School and encourage all students to wear the correct school uniform.

Community Festival



SUGAR RUSH PRIZE WHEEL DONATIONS

There's still time for Years 3-6 to donate to the Sugar Rush Prize Wheel! Collection boxes will be in classrooms for the next two weeks. **If every family donates just one bag of lollies or a family size bar of chocolate, we'll have enough prizes for the whole weekend!**



To make it even easier, Coles have a sale on lollies and chocolates right now and the Oatley store has just donated vouchers for our silent auction so it would be great to support them.

Please note we can't accept donations containing nuts or sour lollies.

Thanks for all of your support across the Festival! This is a major fundraiser for our school so all of your contributions go directly back to supporting your kids.



TRASH & TREASURE DONATIONS

The Community Festival is fast approaching and it is a good time to do some sorting out for this year's Trash and Treasure stall at The Community Festival.

The following items sell best:

- Toys
- Books, DVD's, electronic games
- Jewellery and fashion accessories
- Sporting goods
- Crockery, decorator & household items
- Household small appliances (good working condition)
- Collectables etc

Please note we aren't able to accept clothing, blankets, bed pillows etc.

Donations need to be undamaged, complete and in good resalable condition.

Our next collection day is this Friday 27th July from 8:30am – 9:30am

Location: Shade Sail area near Kindergarten rooms.

We'll have one last drop off day closer to the event. Please direct any enquiries to either:

Lisa Foy Deco1310@hotmail.com

Kim Jepson kimmybimbim@hotmail.com



RAFFLE TICKETS COMING SOON

Join in the fun! Get your tickets in the 2018 OWPS Community Festival Raffle. The following amazing prizes are on offer.

- 1ST PRIZE Limited edition framed photographic artwork 'Aorta' (pictured) by OWPS parent Andrew Nicolaou. \$2,000 RRP. Donated by Andrew Nicolaou of Light Trap Photography.
- 2ND PRIZE 14ct yellow gold curb patterned bracelet. \$1,100 RRP. Donated by Aurea Designs, Frederick Street, Oatley.
- 3RD PRIZE Fun family games, creative kits and toys. \$550 RRP. Donated by OWPS parent Rene Gibb of Crayons.
- 4TH PRIZE Travel Voucher. \$500 RRP. Donated by St George Travel, Mulga Road, Oatley.

A booklet of raffle tickets will be sent home with the eldest child of each family in the coming weeks. Tickets are \$5 each or 3 tickets for \$10, or a booklet of 6 tickets for \$20.

All proceeds of this raffle go directly to Oatley West Public School.

For further details contact Jenny Nicol, picnicjen-ny55@gmail.com or 0410 720 032. The draw will be held at 2pm on Sunday 26 August on the Main Stage. Winners will be notified by phone at the completion of the draw and announced on Facebook www.facebook.com/OWPSCommunityFestival/.