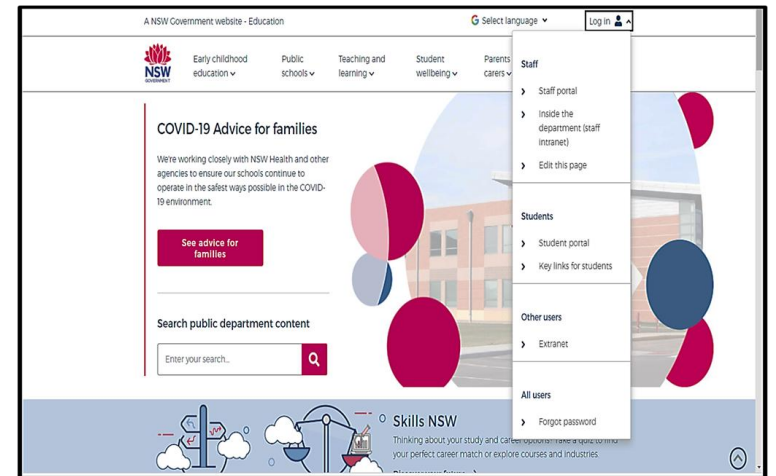
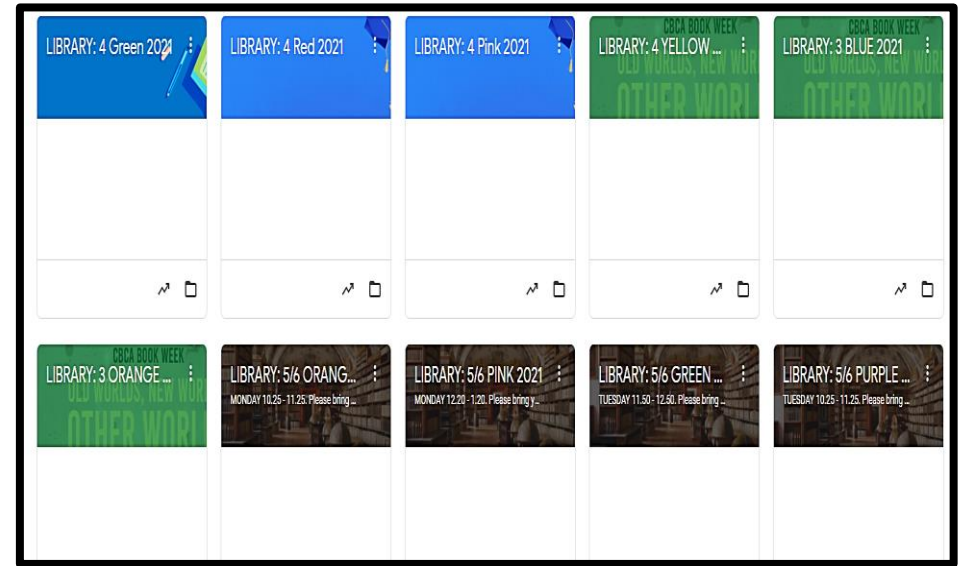


# HOW TO ACCESS OR JOIN A GOOGLE CLASSROOM



# 1.

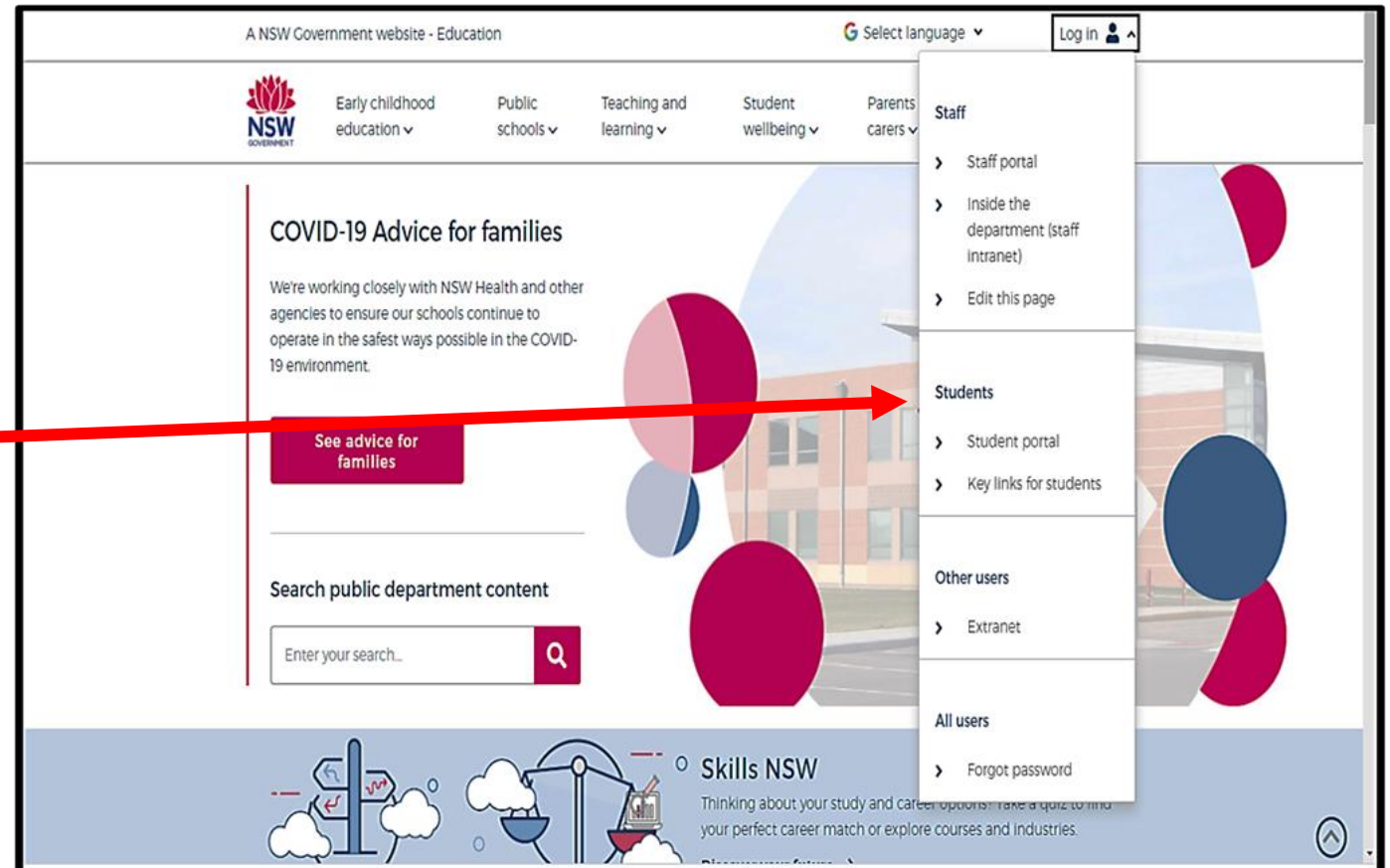
## THE STUDENT PORTAL

- Open your internet browser



- Search in Google  
Department of Education NSW  
[www.education.nsw.edu.au](http://www.education.nsw.edu.au)

- Login – Student Portal



A NSW Government website - Education

Select language Log in

NSW GOVERNMENT

Early childhood education Public schools Teaching and learning Student wellbeing Parents carers

Staff

- > Staff portal
- > Inside the department (staff intranet)
- > Edit this page

Students

- > Student portal
- > Key links for students

Other users

- > Extranet

All users

- > Forgot password

COVID-19 Advice for families

We're working closely with NSW Health and other agencies to ensure our schools continue to operate in the safest ways possible in the COVID-19 environment.

See advice for families

Search public department content

Enter your search\_

Skills NSW

Thinking about your study and career options? Take a quiz to find your perfect career match or explore courses and industries.

# 2.

## THE STUDENT PORTAL

### Login with your DoE Account

Student User ID and Password are the ones that you use at school. Please contact your teacher if you have a problem with your Username or Password, and you are unable to login.

**Student User ID** – firstname.lastname (number if you have one) @det.nsw.edu.au

**Password** – enter your individual password

Example

**User ID**

jane.citizen3@det.nsw.edu.au

**Password**

.....

The screenshot shows a login form titled "Login with your DoE account". It contains two input fields: "User ID" and "Password". The "User ID" field has a placeholder "Enter your user ID" and an example "Example: jane.citizen1". The "Password" field has a placeholder ".....". A blue "Log in" button is located below the fields. Two red arrows point from the text on the left to the "User ID" and "Password" fields respectively.

Login with your DoE account

User ID

Enter your user ID

Example: jane.citizen1

Password

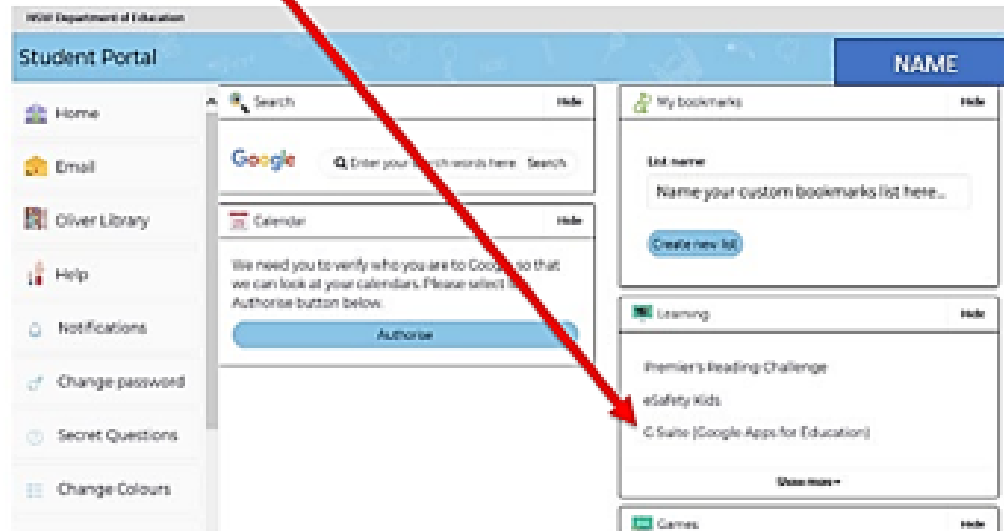
.....

Log in

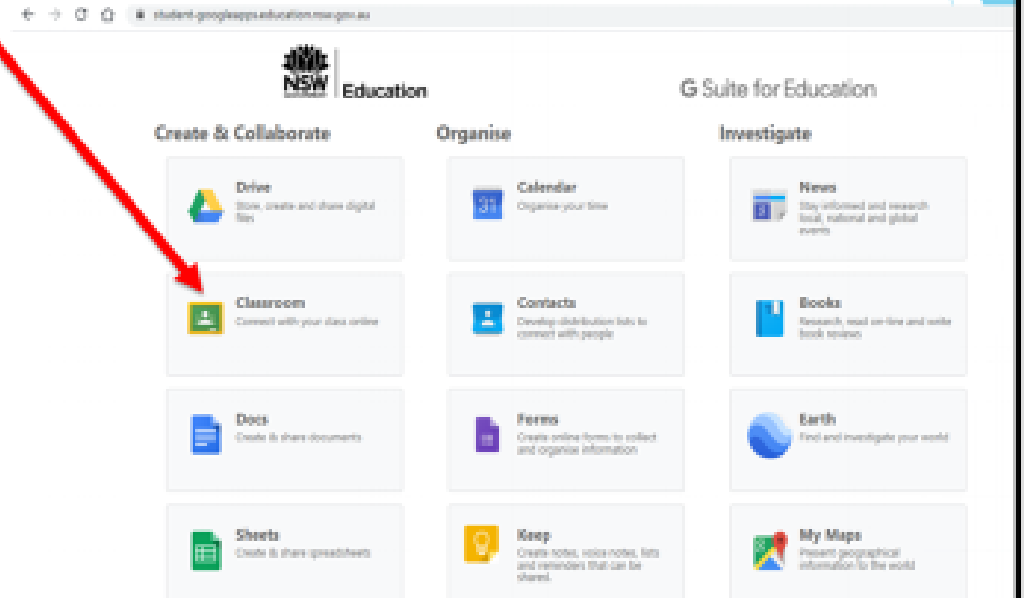
# 3.

## THE STUDENT PORTAL: GOOGLE CLASSROOM

Click on 'G Suite' (Google Apps for Education)



Click on Classroom



You may need to Login using your Google education username

[Username@education.nsw.gov.au](mailto:Username@education.nsw.gov.au).

E.g. jane.citizen3@education.nsw.gov.au

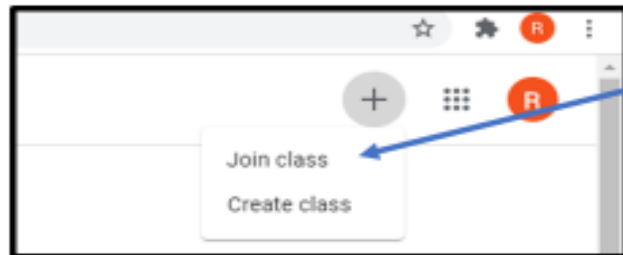
Password: is your school password

# 4.

## THE STUDENT PORTAL JOINING YOUR LIBRARY GOOGLE CLASSROOM



1. Click on the **PLUS SIGN**, on the top right hand side of the screen



2. Click **JOIN CLASS**



3. Enter the **class code** that you have been given for your Library Google Classroom