



OATLEY WEST Lantern

DATES FOR YOUR DIARY

- 2 JUL** P & C Meeting
- 3 JUL** Value Leaf Assembly
2:15pm
- 4 JUL** Reports sent Home
- 5 JUL** Last Day Term 2
- 23 JUL** First Day Term 3

MR NASH'S CORNER

This is the last week of Term 2. Time certainly passes very quickly when you're having fun! It's been a very busy term and I'm extremely pleased with the work we've achieved over the last 9 weeks of T2. Staff have given their best, as usual, in direct response to the positive attitude and dedication of our students to their learning. We certainly have something special here at Oatley West Public School and appreciate the support and positive interest from our community.

Teachers have been busy finalising student assessments and have now completed their reports to go home this Thursday 4th July. The reports are an assessment of your child's learning for Semester 1 (Terms 1 & 2), at their Stage Level. If there is anything you wish to discuss, please feel free to make an appointment to speak to your child's class teacher early next term.

Please enjoy the upcoming break. School finishes on Friday 5th July and commences again on Tuesday 23rd July.

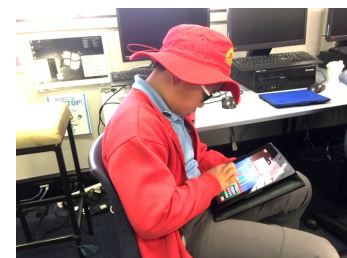
PICTURES FROM THE PAST-Then & Now

From June 2008 Newsletter:

Many thanks go to the P&C for approving expenditure last Wednesday night towards the cabling of classrooms. The cabling will allow for additional computer outlets in each of the classrooms and other 'study' rooms throughout the school. I was extremely impressed in the way the committee debated this issue prior to awarding the \$32 000 needed to complete this project. It is timely, as the department is upgrading the computer network backbone at a cost of \$28 000 and we can save approximately \$10 000 by completing this work at the same time.

I thank Mr Paul Clark our technology consultant from the department for attending on the night so that we had technical expertise at hand.

This will 'future proof' our classrooms to allow for 4 computers, a network printer and projected integrated white-board technology in each classroom.



Oatley Park Avenue Oatley NSW 2223
P 02 9580 5048 F 02 9580 6372
E oatleywest-p.school@det.nsw.edu.au

oatleywest-p.schools.nsw.edu.au

The School by the park -
Great Kids, Great Teachers, Great School!

Principal Nash continued

360 SURVEY REFLECTION TOOL



I have commissioned a survey that provides Principals, school leaders and other school based staff the opportunity to gather feedback on communication and customer relationships with parents, students and the wider community. The 360 Reflection Tool is conducted by the Communication and Engagement Team at the Department of Education. It was developed in consultation with Principals, school community members and professional associations in response to the growing need for schools to provide appropriate communication to members of the school community. The report outlines the key strengths and weaknesses of the school in relation to communication and customer service, giving us an opportunity to reflect on and better understand the needs of our community.

All information gathered is sent directly to the Principal and is completely anonymous. No individual names are attributed to responses or statements given by any of the participants.

The survey is sent to you via email. So that the surveys do not cross over with school holidays, our surveys will go out to you at 7am on July 29 2019 and will close two weeks later at 11.59pm on August 13th 2019. There will be two reminders emailed to you encouraging you to complete the survey.

The results of this survey will be the catalyst for our School Communications Team to evaluate our systems, to enhance what we are already doing well and to implement any areas of concern revealed in the survey.

The survey involves parents, community, teachers and students and will give extensive feedback enabling me to address areas of communication and customer service within our school community.

I would appreciate you taking part in his survey as an ongoing evaluation of the school and where we are up to in our planning cycle (2018-2020).

KINDERGARTEN ENROLMENTS

We are now accepting enrolment applications for 2020. Any school families with pre-schoolers turning 5 years by 31st July 2020 and are ready for school are eligible to enrol. If you have family, friends or neighbours interested in enrolling at Oatley West, please encourage them to enrol soon, so that plans for transition to Kindergarten can be developed. Kindergarten Orientation information will be Wednesday 23th October, 30th October and 6th November at 10am.

Please be aware that all applications must be in area as per the distribution map on the school website and Department of Education website.

NEW PLAYGROUND EXTENSION

It is great to see the safety fencing in place signalling the commencement of our new Astro Turf extension.



The playground extension has been made possible through the P&C being awarded a grant from NSW Government *Community Building Partnership* (Mark Coure) and funds made available from the P&C. We will see work commence this week. There should be no disruption to the school as all work will be carried out behind the fence with work trucks etc. using the carpark to get to their worksite.

Principal Nash continued

NAIDOC 2019

Trust. Treaty. Truth.

Congratulations to all concerned with the assembly last Wednesday. Unfortunately I was not able to attend on the day but I thank Mrs Eldridge and participating teachers for their organisation.

'Let's work together for a shared future'



Paul Nash



VALUE FOR THE WEEK

COOPERATION

- Work together to achieve common goals.
- Help each other to succeed.
- Work together to peacefully resolve conflict.
- Listen to the views of others.

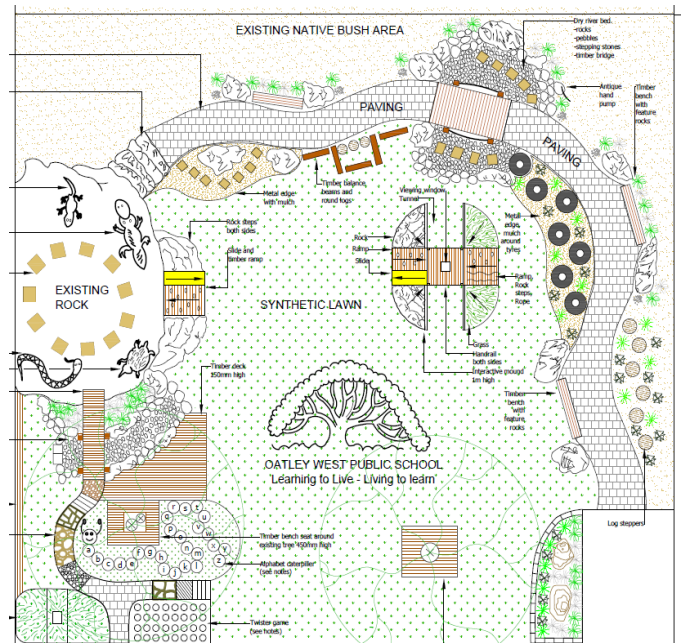


P&C NEWS

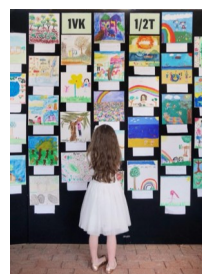
It is with great pride we can announce that building is underway for our new play and learning space in the grounds of our school.

Our P&C has funded \$121,000 towards this initiative thanks to money contributed from a grant won from Community Building Project. As well as parent-raised funds totalling \$55,000 from our Community Festival, Trivia Night and School Banking incentives.

Thank you to the parents of our wonderful school for playing a part in fund raising for this exciting new school space that should be ready for our kids to enjoy in term 3, and for many years to come.



K-2 ART PROJECT



ORDERS CLOSE TODAY!

Kindy, Year 1 & Year 2 students have the opportunity to participate in the upcoming OWPS Community Festival by submitting an artwork that will be hung in the school hall, forming part of the Art Show.

The kids love seeing their artwork on display. Please don't miss out. This is your last chance to order a canvas and be part of the fun.

Order online
www.flexischools.com.au

COMPOST SYSTEM AT OWPS



Turning the compost

Our new compost heap



Compost research



Crunch 'n Sip scraps



Welcoming our new earth worms

Building the worm farms out of milk crates



Mr Eric helping out



Feeding the worms



TALKING HISTORY IN STAGE 3

The students in 5/6 Pink were treated to a special presentation this week from Mr Julian Sheen. Mr Sheen is a former principal of Oatley West and is the current President of the Oatley Heritage and Historical Society. He spoke with the students about Dr Robert Townson, an early settler, prominent thinker and naturalist. Townson held parcels of land here before it was called Oatley and later exchanged these grants for a more substantial one, which became the farm Varro Ville near Campbelltown. The students enjoyed hearing about what Dr Townson was like as a person and have started to think about the power and influence he held in the early days of the colony.

Mr Sheen was the second of three guest speakers who have kindly donated their time to come along and share their knowledge and insights about people from the 1800s. Stage 3 students will use these presentations to help them develop entries in the National History Competition, held later in the year.

Jennifer McDonald

Stage 3 History Teacher.



LIBRARY NEWS

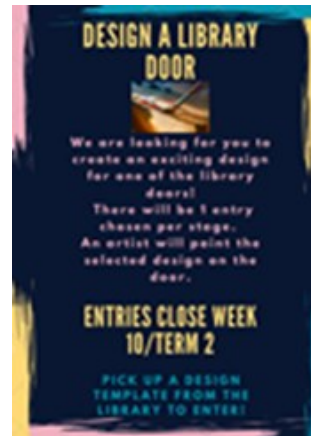
Art Competition

We have received some very creative designs for our

Design a Library Door competition.

You have until Friday of this week to get your designs in!

Rita Fitzpatrick and Holly Blake



LEARNING SUPPORT TEAM –NCCD

Each year schools complete the Nationally Consistent Collection of Data (NCCD) for school students with a disability. The NCCD is a collection that counts the number of school students who are receiving an adjustment or 'help' due to a disability, learning difficulty or health condition.

The information that is collected includes the year of schooling, level of adjustment received and the broad type of disability. Privacy and confidentiality is protected. If you would like more information - a parent, guardian and carers fact sheet can be found through the link below:

<https://www.nccd.edu.au/tools/fact-sheet-parents-guardians-and-carers>

ORGANIC DIGGERS REPORT



With the weather looking fine for today, the Diggers are looking forward to getting out into the garden! We need to do some weeding and general maintenance, in addition to planting crops of cauliflower, broccoli, chives and calendula. We will have a working bee early in term 3 to do any general tidying up after the holidays. Happy gardening!
Mr Burr
Organic Diggers co-ordinator

RECYCLING NEWS



We encourage recycling of all soft plastics at home, they can be placed in the bins outside Coles & Woolworths supermarkets. You would be surprised how much packaging there is! We also have a battery box in the school office for any used batteries from school or home.

SCHOOL CLUB FUNDRAISING ; BEE WRAPPY

Please see attached to the newsletter a flyer for school Club's Fundraising initiative with Bee Wrappy Food wraps. Bee Wrappy food wraps are a reusable, washable and sustainable alternative to single use plastic and cling wrap. Great to wrap sandwiches and food for lunch boxes and every purchase raises funds for our school. Order via flexischools.

YARN UP

Yarn Up Day 2

On Monday 17th June, Dominique (5/6 Blue) and Trey (5/6 Orange) attended the second session for Yarn Up at The Parliament House. There were various workshops including cultural activities, ice breaker games and impromptu speeches. Both students will be presenting their speeches in August in front of their families and other schools at the Parliament House. What a fantastic day we all had!

Mrs Assad



UNIFORM SHOP

Manager – Sia Coelho

Enquiries: scoelho@iinet.net.au

The Uniform Shop is open for your convenience every Thursday from 9-10am at the end of G Block. This on-site service would not be available without our wonderful volunteers.

All uniform requirements are outlined on the School website.

Winter Uniform - All students should be wearing their Winter Uniform

Exchanges: Exchanges can only be made on Thursday when the shop is open. If you can't come in to see us when we are open, please leave your exchange at the school office in a bag, with your child's name and class noted as well as details for the exchange. If the error is ours, please contact us at scoelho@iinet.net.au

PSSA Sport Socks – With the introduction of new PSSA sport socks (Thinskins), sizing has changed. Sizes available are Size 9-2 (Small - geared towards Children), Size 2-7 (Medium - geared towards Teens and Women) and Size 7-11 (Large - geared towards Men). Please ensure your child is wearing the appropriate PSSA sport socks where they are required.

Thank you – Many thanks to Jo G and Bee M-B who volunteered at the Uniform Shop last week.

Volunteers wanted: Currently, Uniform Shop only has a few regular volunteers who help. If you have a spare hour on Thursday mornings from 9-10am, please consider volunteering at the Uniform Shop. Whether it's once a fortnight, month or term, all help is greatly appreciated.

NB: A Volunteers (Free) Working with Children check will be required if you wish to volunteer.

Plastic Bag Fee – Although we are endeavouring to be plastic bag free, **orders will now incur a \$0.25 charge where a plastic bag is required to deliver uniform to your child.** This fee will automatically be added to your payment. If payment is made by cash or cheque, please ensure this fee is added to your payment.

Uniform Orders: Order forms (dated January 2019) can be completed and dropped in to Letterbox 8 located in the front courtyard. Please note, **orders are not accepted via e-mail.** All orders will be delivered to your child's classroom on Thursday when the shop is open, provided they are received prior to 9.30am on Thursday. The preferred payment method for orders is by Credit Card or Cheque as we cannot be held accountable for lost cash/orders. Cards are generally debited one day prior to delivery.

SCHOOL BANKING

Many thanks to the wonderful parents who volunteer as our School Banking Co-ordinators and process our banking every week.

A big thank you to Faith S, Angel D, and Tina Y for being generous with your time and helping with school banking last week!

Apart from teaching children the benefits of saving money regularly, school banking is a great fundraising opportunity for our school.

OWPS receives a Regular Savers Contribution of \$5 for every 10 deposits processed per student as well as an Annual Contribution which is based on the number of students who made at least one School Banking deposit in the prior year.

To date we have raised \$745.00 for our school.

Many thanks to parents and students supporting school banking at OWPS.

If you are interested in volunteering for this great program, please come see us every Thursday morning at the school hall canteen straight after the bell.

Enjoy the holidays J
Regards
Jason Low

2019 prizes;

<https://www.commbank.com.au/content/dam/commbank-assets/banking/school-banking/2019-01/bts-rewards-card-a4.pdf>

Any questions?

Contact owpsschoolbanking@gmail.com

CANTEEN NEWS



WOW what a term it's been in Term 2 with the roll out of the new canteen menu, transitioning over to the Health Schools Canteen Strategy and finally receiving our 2 new fridges.

We managed to finally roll out the new healthier canteen menu and it has been a success. Thank you to all the kids and families who have embraced the new menu and changes.

We have received some great feedback from the school kids and teachers who are enjoying the new healthy options including pastas, dumplings and fresh rice paper rolls. It's great to see everyone making healthier choices.

If you haven't seen already, our new menu is attached for your information. Hard copies are available at the canteen if you would like a copy.

I am also pleased to let you know that Oatley West Public School has now achieved the Healthy Schools Canteen Strategy registration. We were presented with a lovely certificate by Karina from the Health Department last week. We will hang this proudly in the canteen for everyone to see!

It was with much effort and hard work for us to achieve this and now we are proud to say that OWPS is a Healthy School Canteen.

CANTEEN NEWS

Lastly, thank you to Peter York for helping us acquire our new fridges and also to Mr Geoff and Bec for helping us move and setting up the new fridges into the canteen. It took a huge effort and lots of sweat to get the fridges up the stairs and through the door but we finally managed in the end.

Have a great holiday break and happy healthier eating in Term 3!

Anh and Laronne





OATLEY WEST PUBLIC SCHOOL CANTEEN MENU 2019

Oatley Park Avenue Oatley NSW 2223 P 02 9580 5048 F 02 9580 6372 E oatleywest-p.school@det.nsw.edu.au

Open Monday-Friday (unless otherwise advised) **Online ordering at Flexischools.com.au**

SNACKS (Over the counter)

Fresh Fruit (apples, seasonal fruit)	50c
Popcorn (handmade, plain & unsalted)	50c
Chocolate Cookie (handmade)	50c
Cheese Sticks (handmade)	\$1.00
Cheesy Garlic Bread (handmade)	\$1.00
Custard Cup (Vanilla/Chocolate)	\$1.00
Red Rock Deli Chips (Sea Salt flavour)	\$1.20
Nutrigrain Snack Bag	20c
Weetbix Bites	(each) 5c

FROZEN TREATS

Frozen Juice Cup (Apple, Apple & Blackcurrant)	\$1.00
Quelch Frozen Juice Sticks (various flavours)	50c
Moosie (frozen milk treat) (Chocolate, Blue Bubblegum)	\$1.00
Twisted Frozen Yogurt (Mango&Watermelon, Strawberry/Vanilla)	\$2.00
99% Fruit Juice Slushie (various flavours)	half cup \$1.50 full cup \$2.20

SANDWICHES, ROLLS & WRAPS

Vegemite/Jam/Honey	\$2.00
Cheese	\$2.50
Ham / Chicken Breast / Tuna / Egg	\$3.50
Salad	\$4.00
<i>*Add 50c for Roll or Wrap</i>	<i>*Add 30c for TOASTED</i>
EXTRAS	
Cheese	50c
Tomato/Lettuce/Cucumber/Carrot/Beetroot	50c
Salad / Avocado	\$1.00
Sauce (Mayo/Tomato/BBQ/ Sweet chilli)	30c

Fresh Rice Paper Rolls (made to order – 2 per serve)

Vegetarian (rice noodle, lettuce, cucumber, carrot)	\$4.00
Add chicken	\$5.00

SALADS

Garden Salad (lettuce, tomato, cucumber, carrot)	\$6.00
Greek Salad (lettuce, tomato, cucumber, red onion, fetta cheese, olives)	\$6.50
EXTRAS	
Tuna, Egg, Chicken	\$1.00

* VOLUNTEERS ARE ALWAYS NEEDED AND WELCOME *

If you have any spare time to offer please come and book in your time today. We would love to see you in the Canteen! Contact Laronne 0438422179 / Anh 0431700288



OATLEY WEST PUBLIC SCHOOL CANTEEN MENU 2019

Oatley Park Avenue Oatley NSW 2223 P 02 9580 5048 F 02 9580 6372 E oatleywest-p.school@det.nsw.edu.au

Open Monday-Friday (unless otherwise advised) **Online ordering at Flexischools.com.au**

HOT FOOD

Large Meat Pie (from Oatley Pies)	\$5.20
Sausage Roll (from Oatley Pies)	\$4.50
Flame Grilled Chicken Wrap (grilled chicken, lettuce, mayo)	\$5.50
Flame Grilled Chicken Burger (grilled chicken, lettuce, mayo)	\$5.50
Beef Burger (beef pattie, tomato, lettuce, sauce)	\$5.50
Cheeseburger (beef pattie, cheese, sauce)	\$5.50
Chicken Breast Wedges 3 for \$2.50 6 for \$5.00 (crumbed - Steggles brand)	
Chicken Breast Wedge Wrap or Roll (3 crumbed chicken wedges, lettuce, mayo)	\$4.50
Vegetable Spring Rolls 4 for \$2.50 8 for \$5.00 (oven baked - commercial brand)	
Mamee Noodle Cup (chicken, beef)	\$3.00
Macaroni & Cheese Pasta (homemade cheese sauce & macaroni pasta)	\$4.50
Pasta Bolognese (beef & veges cooked in a homemade tomato sauce & pasta)	\$4.50
Chicken Dumplings (steamed – commercial brand)	6 for \$5.00

SUSHI ROLLS (Monday & Friday ONLY)

Avocado roll	\$3.50
Cucumber roll	\$3.50
Tuna roll	\$3.50
Tuna & Avocado or Cucumber roll	\$3.50
Chicken teriyaki & Avocado or Cucumber roll	\$3.50
Prawn tempura roll	\$3.50
Chicken Schnitzel roll	\$3.50

DRINKS

Water (600ml plain, still)	\$2.00
Nippys Flavoured Milk (250ml) (Strawberry, Chocolate)	\$2.20
Fruit Juice Popper (250ml) (Apple, Apple/Blackcurrant, Orange)	\$2.20
Focus Lite Sports Water (250ml) (Lemonade, Fruit Tingle)	\$2.20
Juice Bomb (250ml sparkling 99% juice) (Apple/Blackcurrant, Apple/Raspberry, Apple cola, Lemonade)	\$2.20
Hot Chocolate (Winter only)	\$1.50

*****Lunch orders that include "Drinks and Frozen Treats" will be stamped and should be collected from the canteen*****

* VOLUNTEERS ARE ALWAYS NEEDED AND WELCOME *

If you have any spare time to offer please come and book in your time today. We would love to see you in the Canteen! Contact Laronne 0438422179 / Anh 0431700288



CONGRATULATIONS

Oatley West Public School

FOR OFFICIALLY OPERATING A
GREAT CHOICE
HEALTHY SCHOOL CANTEEN

11 June 2019

A handwritten signature in black ink, appearing to read "Jo Mitchell".

Jo Mitchell
Executive Director
Centre for Population Health

A handwritten signature in black ink, appearing to read "Glenn King".

Mr Glenn King
Deputy Secretary
Department of Premier and Cabinet



Fundraising

with **BEE WRAPPY®**
Beeswax Food Wraps

\$25 for 3 pack

A reusable, washable and beautiful alternative to single use plastic

3 PACK

- 1 small
- 1 medium
- 1 large

What are beeswax wraps?

Bee Wrappy Beeswax Food Wraps are used to cover food, vegetables, fruits and bowls in the same way you would use cling film. They are washable, reusable and compostable.

How do Bee Wrappys work?

With the warmth of your hands, the wraps become malleable. This allows you to mould them around food and bowls, where the wrap will stick to itself, creating a breathable yet protective cover. You can also fold Bee Wrappys into snack-pouches or little envelopes which are perfect for out and about.

What can I use my beeswax wraps for?

You can use your Bee Wrappys to cover almost any food or bowl in the kitchen.

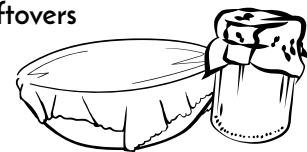


Wrap:

- half an avocado or lemon
- almost any vegetable (like pumpkin, celery, cauliflower and zucchini)
- cut fruit
- sandwiches for your lunch or picnics

Cover:

- large salad bowls for a BBQ
- cool casserole or lasagna dishes
- leftovers



Working towards making our school a more environmentally friendly place and to reduce the amount of non-recyclable waste produced on our playgrounds. School club would like to encourage you to replace your single use plastic wraps with a more earth friendly and sustainable solution, that supports the learning initiatives in our school at the same time by raising funds for your kids.

To order: login to: FLEXISCHOOLS search Oatley West Public School.

You can order anytime between now and the end of Week 2 Term 3 - orders will be delivered to your child's classroom.